

WILDSIDE NATURE TOURS

YACHT SOLARIS ITINERARY B
WILDLIFE CHECKLIST
UPDATED 2021



GALAPAGOS

Galapagos Map • Species Status Key

Species Status Key

ED= Endemic **EN**= Endangered **EX**= Extirpated/Extinct **CR**= Critically Endangered
NT= Near-Threatened **V**= Vulnerable **RA**= Rare/Accidental **I**= Introduced



NOTES

Daily Notes

Day 1 - SEPT 4 - Official Arrival Day

Day 2 - SEPT 5 - Guango Lodge

--Swordbilled Hummingbird and so much more!

Day 3 - SEPT 6 - Quito to Baltra

-Arrive in Galapagos 11:00 am

-Santa Cruz Highlands

--Giant Tortoises, Vegetarian Finch, Scalesia Forest

Day 4 - SEPT 7 - GENOVESA (The Bird Island)

-Darwin's Bay Beach

--Red-footed Boobies, Frigatebirds, Finches

-Snorkeling @ Prince Philip's Steps

-Panga Ride to dry landing at Prince Philip's Steps

--Galapagos Fur Sea Lions

--Short-eared Owls

Day 5 - SEPT 8: SOUTH PLAZA & SANTA FE

-South Plaza walk along the cliffs

--Galapagos Land Iguana, Lava Lizards

--Common Cactus Finch

-Santa Fe loop trail

--Santa Fe Land Iguana

--Lots and lots and lots of sea lions

Day 6 - SEPT 9: SAN CRISTOBAL

-Cerro Brujo (Wizard Hill) Beach walk

--Diving Boobies, Ghost Crabs, Shorebirds

-Kicker Rock circumnavigation

-Tortuguera at Cerro Colorado

--San Cristobal Mockingbirds

--Intermediate shell tortoises

Day 7 - SEPT 10: ESPAÑOLA

-Gardner Beach walk

--Española Mockingbirds

--Española Cactus Finch

-Snorkeling at Gardner Island

-Punta Suarez hike

--Waved Albatross

--Galapagos Hawk

Day 8 - SEPT 11: FLOREANA & CHAMPION

-Punta Cormorant green beach

--Floreana Cut-leaf Daisy

--American Flamingos and shorebirds

-Flour Beach sting ray shuffle

-Post Office Bay post cards and snorkeling

-Sunset panga ride

Day 9 - SULLIVAN BAY/SANTIAGO/BARTOLOMÉ

-Panga ride in Sullivan Bay

--Walk on the Santiago lava field

-Snorkeling along Santiago

-Snorkeling under Pinnacle Rock

--Galapagos Shark

-Climb to the top of Bartolomé

Day 10 - BLACK TURTLE COVE/Santa Cruz

-Panga Ride

- Baltra Flight to Quito

Day 11 - Departure Day

NOTES

Birds of the Galápagos

	COMMON NAME	SCIENTIFIC NAME	Status & Notes	SANTA CRUZ	GENOVESA	SOUTH PLAZA	SANTA FE	SAN CRISTOBAL	ESPANOLA	FLOREANA	SANTIAGO	BARTOLOME
				BALTRA, ET AL						CHAMPION	BARTOLOME	
	White/Blue ~ Anything's possible!											
	Endemic ~ Typically found here											
	Endemic ~ Rarely found here											
	Endemic ~ Should not be found here											
1	Black-bellied Whistling Duck	<i>Dendrocygna autumnalis</i>	RA									
2	Cinnamon Teal	<i>Spatula cyanoptera</i>	RA									
3	Blue-winged Teal	<i>Spatula discors</i>										
4	Northern Shoveler	<i>Spatula clypeata</i>	RA									
5	White-cheeked Pintail	<i>Anas bahamensis</i>						X		X		
6	Masked Duck	<i>Nomonyx dominicus</i>	RA									
7	Galapagos Penguin	<i>Spheniscus mendiculus</i>	ED EN									X
8	Elliot's Storm Petrel	<i>Oceanites gracilis</i>		Xx	X	X	X	X	X	X	X	X
9	White-faced Storm Petrel	<i>Pelagodroma marina</i>	RA									
10	White-bellied Storm Petrel	<i>Fregetta grallaria</i>	RA									
11	Black-footed Albatross	<i>Phoebastria nigripes</i>	RA NT									
12	Waved Albatross	<i>Phoebastria irrorata</i>	ED CR						X			
13	Wandering Albatross	<i>Diomedea exulans</i>	RA V									
14	Black-browed Albatross	<i>Thalassarche melanophris</i>	RA NT									
15	Least Storm Petrel	<i>Oceanodroma microsoma</i>										
16	Wedge-rumped Storm Petrel	<i>Oceanodroma tethys</i>			X			X	X	X	X	
17	Band-rumped Storm Petrel	<i>Oceanodroma castro</i>										
18	Leach's Storm Petrel	<i>Oceanodroma leucorhoa</i>	RA									
19	Markham's Storm Petrel	<i>Oceanodroma markhami</i>	RA									
20	Black Storm Petrel	<i>Oceanodroma melania</i>	RA									
21	Southern Giant Petrel	<i>Macronectes giganteus</i>	RA									
22	Southern Fulmar	<i>Fulmarus glacialisoides</i>	RA									
23	Cape Petrel	<i>Daption capense</i>	RA									
24	Antarctic Prion	<i>Pachyptila desolata</i>	RA									
25	Juan Fernandez Petrel	<i>Pterodroma externa</i>	RA V									
26	Galapagos Petrel	<i>Pterodroma phaeopygia</i>	ED CR					X				
27	Mottled Petrel	<i>Pterodroma inexpectata</i>	RA NT									
28	Gould's Petrel	<i>Pterodroma leucoptera</i>	RA V									
29	Black Petrel	<i>Procellaria parkinsoni</i>	RA V									
30	Wedge-tailed Shearwater	<i>Ardenna pacifica</i>	RA									

Birds of the Galápagos

	COMMON NAME	SCIENTIFIC NAME	Status & Notes	SANTA CRUZ	GENOVESA	SOUTH PLAZA	SANTA FE	SAN CRISTOBAL	ESPANOLA	FLOREANA	SANTIAGO	BARTOLOME
				BALTRA, ET AL						CHAMPION	BARTOLOME	
	White/Blue ~ Anything's possible!											
	Endemic ~ Typically found here											
	Endemic ~ Rarely found here											
	Endemic ~ Should not be found here											
31	Sooty Shearwater	<i>Ardenna grisea</i>	RA NT									
32	Pink-footed Shearwater	<i>Ardenna creatopus</i>	RA V									
33	Manx Shearwater	<i>Puffinus puffinus</i>	RA									
34	Galapagos Shearwater	<i>Puffinus subalaris</i>	ED	Xx	X	X	X	X	X	X	X	X
35	Pied-billed Grebe	<i>Podilymbus podiceps</i>										
36	American Flamingo	<i>Phoenicopterus ruber</i>								X		
37	Chilean Flamingo	<i>Phoenicopterus chilensis</i>	NT									
38	Red-billed Tropicbird	<i>Phaethon aethereus</i>			X	X			X	X	X	
39	Red-tailed Tropicbird	<i>Phaethon rubricauda</i>	RA									
40	Black-crowned Night Heron	<i>Nycticorax nycticorax</i>	RA									
41	Yellow-crowned Night Heron	<i>Nyctanassa violacea</i>		X	X			X				X
42	Green Heron	<i>Butorides virescens</i>										
43	Lava Heron	<i>Butorides sundevalli</i>	ED	Xx				X	X	X	X	X
44	Striated Heron	<i>Butorides striata</i>	RA	x								
45	Western Cattle Egret	<i>Bubulcus ibis</i>	RA	Xx		X		X		X		
46	Great Blue Heron	<i>Ardea herodias</i>		x				X		X		
47	Great Egret	<i>Ardea alba</i>		x								
48	Tricolored Heron	<i>Egretta tricolor</i>	RA									
49	Little Blue Heron	<i>Egretta caerulea</i>	RA									
50	Snowy Egret	<i>Egretta thula</i>	RA									
51	Brown Pelican	<i>Pelecanus occidentalis</i>		Xx	X	X	X	X	X	X	X	X
52	Magnificent Frigatebird	<i>Fregata magnificens</i>		Xx	X	X	X	X	X	X	X	X
53	Great Frigatebird	<i>Fregata minor</i>		x	X			X	X			
54	Blue-footed Booby	<i>Sula nebouxii</i>		Xx	X	X	X	X	X	X	X	X
55	Peruvian Booby	<i>Sula variegata</i>										
56	Nazca Booby	<i>Sula granti</i>		X	X	X	X	X	X	X	X	X
57	Red-footed Booby	<i>Sula sula</i>			X							
58	Brown Booby	<i>Sula leucogaster</i>	RA									
59	Flightless Cormorant	<i>Phalacrocorax harrisi</i>	ED V									
60	Western Osprey	<i>Pandion haliaetus</i>										

LAVA X STRIATED

X

Birds of the Galápagos

	COMMON NAME	SCIENTIFIC NAME	Status & Notes	SANTA CRUZ	GENOVESA	SOUTH PLAZA	SANTA FE	SAN CRISTOBAL	ESPANOLA	FLOREANA	SANTIAGO	BARTOLOME
				BALTRA, ET AL						CHAMPION		
	White/Blue ~ Anything's possible!											
	Endemic ~ Typically found here											
	Endemic ~ Rarely found here											
	Endemic ~ Should not be found here											
61	Galapagos Hawk	<i>Buteo galapagoensis</i>	ED V				X		X		X	
62	Galapagos Crake	<i>Laterallus spilonota</i>	ED V									
63	Sora	<i>Porzana carolina</i>	RA									
64	Paint-billed Crake	<i>Neocrex erythrops</i>		X								
65	Purple Gallinule	<i>Porphyrio martinica</i>	RA	X								
66	Common Gallinule	<i>Gallinula galeata</i>		X								
67	American Coot	<i>Fulica americana</i>										
68	Andean Coot	<i>Fulica ardesiaca</i>	RA									
69	American Oystercatcher	<i>Haematopus palliatus</i>						X	X		X	
70	Black-necked Stilt	<i>Himantopus mexicanus</i>								X		
71	Pacific Golden Plover	<i>Pluvialis fulva</i>	RA									
72	American Golden Plover	<i>Pluvialis dominica</i>	RA									
73	Grey Plover	<i>Pluvialis squatarola</i>						X		X		
74	Semipalmated Plover	<i>Charadrius semipalmatus</i>						X		X		
75	Wilson's Plover	<i>Charadrius wilsonia</i>	RA									
76	Killdeer	<i>Charadrius vociferus</i>	RA									
77	Tawny-throated Dotterel	<i>Oreopholus ruficollis</i>	RA									
78	Whimbrel	<i>Numenius phaeopus</i>		Xx				X		X		
79	Hudsonian Godwit	<i>Limosa haemastica</i>	RA									
80	Marbled Godwit	<i>Limosa fedoa</i>	RA									
81	Ruddy Turnstone	<i>Arenaria interpres</i>			X	X		X		X	X	
82	Black Turnstone	<i>Arenaria melanocephala</i>	RA									
83	Red Knot	<i>Calidris canutus</i>	RA NT									
84	Surfbird	<i>Calidris virgata</i>	RA									
85	Stilt Sandpiper	<i>Calidris himantopus</i>	RA									
86	Sanderling	<i>Calidris alba</i>						X	X			
87	Baird's Sandpiper	<i>Calidris bairdii</i>	RA									
88	Least Sandpiper	<i>Calidris minutilla</i>						X		X		
89	White-rumped Sandpiper	<i>Calidris fuscicollis</i>	RA									
90	Buff-breasted Sandpiper	<i>Calidris subruficollis</i>	RA NT									

Birds of the Galápagos

	COMMON NAME	SCIENTIFIC NAME	Status & Notes	SANTA CRUZ	GENOVESA	SOUTH PLAZA	SANTA FE	SAN CRISTOBAL	ESPANOLA	FLOREANA	SANTIAGO	BARTOLOME
				BALTRA, ET AL						CHAMPION	BARTOLOME	
	White/Blue ~ Anything's possible!											
	Endemic ~ Typically found here											
	Endemic ~ Rarely found here											
	Endemic ~ Should not be found here											
91	Pectoral Sandpiper	<i>Calidris melanotos</i>	RA									
92	Semipalmated Sandpiper	<i>Calidris pusilla</i>	RA NT									
93	Western Sandpiper	<i>Calidris mauri</i>	RA									
94	Short-billed Dowitcher	<i>Limnodromus griseus</i>										
95	Wilson's Phalarope	<i>Phalaropus tricolor</i>						X		X		
96	Red-necked Phalarope	<i>Phalaropus lobatus</i>										
97	Red Phalarope	<i>Phalaropus fulicarius</i>										
98	Spotted Sandpiper	<i>Actitis macularius</i>										
99	Solitary Sandpiper	<i>Tringa solitaria</i>	RA									
100	Wandering Tattler	<i>Tringa incana</i>			X		X			X	X	
101	Lesser Yellowlegs	<i>Tringa flavipes</i>										
102	Willet	<i>Tringa semipalmata</i>										
103	Greater Yellowlegs	<i>Tringa melanoleuca</i>										
104	Brown Noddy	<i>Anous stolidus</i>		Xx		X		X	X			X
105	White Tern	<i>Gygis alba</i>	RA									
106	Swallow-tailed Gull	<i>Creagrus furcatus</i>	ED	x	X	X		X	X	X	X	X
107	Grey-headed Gull	<i>Chroicocephalus cirrocephalus</i>	RA									
108	Lava Gull	<i>Leucophaeus fuliginosus</i>	ED V	Xx	X	X		X				
109	Laughing Gull	<i>Leucophaeus atricilla</i>							X			
110	Franklin's Gull	<i>Leucophaeus pipixcan</i>										
111	Ring-billed Gull	<i>Larus delawarensis</i>	RA									
112	Kelp Gull	<i>Larus dominicanus</i>	RA									
113	Royal Tern	<i>Thalasseus maximus</i>										
114	Elegant Tern	<i>Thalasseus elegans</i>	RA NT									
115	Sooty Tern	<i>Onychoprion fuscatus</i>										
116	Common Tern	<i>Sterna hirundo</i>										
117	Arctic Tern	<i>Sterna paradisaea</i>										
118	Black Tern	<i>Chlidonias niger</i>	RA									
119	Inca Tern	<i>Larosterna inca</i>	RA NT									
120	South Polar Skua	<i>Stercorarius maccormicki</i>	RA									

Birds of the Galápagos

	COMMON NAME	SCIENTIFIC NAME	Status & Notes	SANTA CRUZ	GENOVESA	SOUTH PLAZA	SANTA FE	SAN CRISTOBAL	ESPANOLA	FLOREANA	SANTIAGO	BARTOLOME
				BALTRA, ET AL						CHAMPION	BARTOLOME	
	White/Blue ~ Anything's possible!											
	Endemic ~ Typically found here											
	Endemic ~ Rarely found here											
	Endemic ~ Should not be found here											
121	Pomarine Jaeger	<i>Stercorarius pomarinus</i>	RA									
122	Parasitic Jaeger	<i>Stercorarius parasiticus</i>	RA									
123	Rock Dove	<i>Columba livia</i>	EX									
124	Eared Dove	<i>Zenaida auriculata</i>	RA									
125	Galapagos Dove	<i>Zenaida galapagoensis</i>	ED	x	x	x	x	x	x	x	x	x
126	Smooth-billed Ani	<i>Crotophaga ani</i>	I	x				x		x		
127	Dark-billed Cuckoo	<i>Coccyzus melacoryphus</i>		x								
128	Black-billed Cuckoo	<i>Coccyzus erythrophthalmus</i>	RA									
129	American Barn Owl	<i>Tyto furcata</i>										
130	Short-eared Owl	<i>Asio flammeus</i>			x							
131	Common Nighthawk	<i>Chordeiles minor</i>										
132	Chimney Swift	<i>Chaetura pelagica</i>	RA NT									
133	Belted Kingfisher	<i>Megaceryle alcyon</i>										
134	Peregrine Falcon	<i>Falco peregrinus</i>										
135	Darwin's Flycatcher	<i>Pyrocephalus nanus</i>	ED V									
136	San Cristobal Flycatcher	<i>Pyrocephalus dubius</i>	ED EX									
137	Eastern Kingbird	<i>Tyrannus tyrannus</i>	RA									
138	Galapagos Flycatcher	<i>Myiarchus magnirostris</i>	ED	x				x	x	x		
139	Red-eyed Vireo	<i>Vireo olivaceus</i>	RA									
140	Cedar Waxwing	<i>Bombycilla cedrorum</i>	RA									
141	Sand Martin	<i>Riparia riparia</i>	RA									
142	Purple Martin	<i>Progne subis</i>	RA									
143	Galapagos Martin	<i>Progne modesta</i>	ED EN	x					x			
144	Brown-chested Martin	<i>Progne tapera</i>	RA									
145	Barn Swallow	<i>Hirundo rustica</i>						x	x			
146	American Cliff Swallow	<i>Petrochelidon pyrrhonota</i>	RA									
147	Galapagos Mockingbird	<i>Mimus parvulus</i>	ED	x	x	x	x					
148	Floreana Mockingbird	<i>Mimus trifasciatus</i>	ED CR							x		
149	Espanola Mockingbird	<i>Mimus macdonaldi</i>	ED V						x			
150	San Cristobal Mockingbird	<i>Mimus melanotis</i>	ED EN					x				

Birds of the Galápagos

	COMMON NAME	SCIENTIFIC NAME	Status & Notes	SANTA CRUZ	GENOVESA	SOUTH PLAZA	SANTA FE	SAN CRISTOBAL	ESPANOLA	FLOREANA	SANTIAGO	BARTOLOME
				BALTRA, ET AL						CHAMPION	BARTOLOME	
	White/Blue ~ Anything's possible!											
	Endemic ~ Typically found here											
	Endemic ~ Rarely found here											
	Endemic ~ Should not be found here											
151	Northern Waterthrush	<i>Parkesia noveboracensis</i>	RA									
152	Prothonotary Warbler	<i>Protonotaria citrea</i>	RA									
153	American Redstart	<i>Setophaga ruticilla</i>	RA									
154	Mangrove Warbler	<i>Setophaga petechia</i>		xx	x	x	x	x	x	x	x	x
155	Blackpoll Warbler	<i>Setophaga striata</i>	RA									
156	Bobolink	<i>Dolichonyx oryzivorus</i>										
157	Great-tailed Grackle	<i>Quiscalus mexicanus</i>	RA									
158	Bananaquit	<i>Coereba flaveola</i>	RA									
159	Large Ground Finch	<i>Geospiza magnirostris</i>	ED		x							
160	Espanola Cactus Finch	<i>Geospiza conirostris</i>	ED V						x			
161	Medium Ground Finch	<i>Geospiza fortis</i>	ED	xx		x	x	x		x		
162	Small Ground Finch	<i>Geospiza fuliginosa</i>	ED	xx		x	x	x	x	x	x	
163	Sharp-beaked Ground Finch	<i>Geospiza difficilis</i>	ED	x								
164	Genovesa Ground Finch	<i>Geospiza acutirostris</i>	ED V		x							
165	Vampire Ground Finch	<i>Geospiza septentrionalis</i>	ED V									
166	Common Cactus Finch	<i>Geospiza scandens</i>	ED			x	x					
167	Genovesa Cactus Finch	<i>Geospiza propinqua</i>	ED V		x							
168	Vegetarian Finch	<i>Platyspiza crassirostris</i>	ED	x								
169	Large Tree Finch	<i>Camarhynchus psittacula</i>	ED V	x								
170	Medium Tree Finch	<i>Camarhynchus pauper</i>	ED CR									
171	Small Tree Finch	<i>Camarhynchus parvulus</i>	ED	x				x		x		
172	Woodpecker Finch	<i>Camarhynchus pallidus</i>	ED V	x								
173	Mangrove Finch	<i>Camarhynchus heliobates</i>	ED CR									
174	Green Warbler-Finch	<i>Certhidea olivacea</i>	ED	x		x	x					
175	Grey Warbler-Finch	<i>Certhidea fusca</i>	ED		x				x	x		
176	Summer Tanager	<i>Piranga rubra</i>	RA									
177	Scarlet Tanager	<i>Piranga olivacea</i>	RA									
178	Rose-breasted Grosbeak	<i>Pheucticus ludovicianus</i>	RA									
179	Indigo Bunting	<i>Passerina cyanea</i>	RA									
180												

Reptiles of the Galápagos

	COMMON NAME	SCIENTIFIC NAME	SANTA CRUZ	GENOVESA	SOUTH PLAZA	SANTA FE	SAN CRISTOBAL	ESPANOLA	FLOREANA	SANTIAGO
			BALTRA, ET AL					CHAMPION	BARTOLOME	
	White/Tan ~ Anything's possible!									
	Endemic ~ Typically found here									
	Endemic ~ Not Typically found here									
1	GIANT TORTOISES									
2	Santa Cruz Giant Tortoise	<i>Geochelone elephantopus porteri</i>	X							
3	Santiago Giant Tortoise	<i>Geochelone elephantopus darwini</i>								
4	San Cristobal Giant Tortoise	<i>G. elephantopus chatamensis</i>					X			
5	Espanola Giant Tortoise	<i>G. elephantopus hoodensis</i>								
6										
7	SEA TURTLES									
8	Green Turtle	<i>Chelonia mydas</i>	Xx			X	X	X	X	X
9	Hawksbill Turtle	<i>Eretmochelys imbricata bisca</i>								
10	Leatherback Turtle	<i>Dermochelys coriacea</i>								
11	Olive Ridley Turtle	<i>Lepidochelys olivacea</i>								
12										
13	IGUANAS									
14	Marine Iguana	<i>Amblyrhynchus cristatus</i>			X	X			X	
15	Santa Cruz Marine Iguana	<i>A. c. hassi</i>	X							
16	San Crist./Santiago Marine Iguana	<i>A. c. mertensi</i>					X			
17	Espanola Marine Iguana	<i>A. c. venustissimus</i>						X		
18	Genovesa Marine Iguana	<i>A. c. nanus</i>		X						
19	Land Iguana	<i>Conolophus subcristatus</i> x			X					
20	Sante Fe Land Iguana	<i>Conolophus pallidus</i>				X				
21										
22	LAVA LIZARDS									
23	Lava Lizard	<i>Microlophus albemarlensis</i>	x		X	X				X
24	San Cristobal Lava Lizard	<i>Microlophus bivittatus</i>					X			
25	Floreana Lava Lizard	<i>Microlophus grayi</i>							X	
26	Espanola Lava Lizard	<i>Microlophus delanonsis</i>						X		
27										
28										
29	SNAKES									
30	Steindachner's (Striped) Galapagos Snake	<i>Antillophis steindachneri</i>								
31	Galapagos Snake	<i>Alsophis dorsalis dorsalis</i>								
32	Hood Snake	<i>Philodryas biserialis hoodensis</i>								
33	Floreana Snake	<i>Philodryas biserialis biserialis</i>								
34	San Cristobal Snake	<i>Philodryas biserialis eibli</i>								

Mammals of the Galápagos

	COMMON NAME	SCIENTIFIC NAME	SANTA CRUZ	GENOVESA	SOUTH PLAZA	SANTA FE	SAN CRISTOBAL	ESPANOLA	FLOREANA	SANTIAGO	BARTOLOME
			BALTRA, ET AL					CHAMPION	BARTOLOME		
	White/Tan ~ Anything's possible!										
	Endemic ~ Typically found here										
	Endemic ~ Not Typically found here										
1	Sea Mammals										
2	Galapagos Sea Lion	<i>Zalophus californianus wollebacki</i>	Xx	X	X	X	X	X	X	X	X
3	Galapagos Fur Seal	<i>Arctocephalus galapagoensis</i>		X							
4	Sei Whale	<i>Balaenoptera borealis</i>									
5	Bryde's Whale	<i>Balaenoptera edeni</i>									
6	Minke Whale	<i>Balaenoptera acutorostrata</i>									
7	Humpback Whale	<i>Megaptera novaeangliae</i>						X			
8	Sperm Whale	<i>Physeter macrocephalus</i>									
9	Orca (Killer Whale)	<i>Orcinus orca</i>									
10	Shortfin Pilot Whale	<i>Globicephala macrorhynchus</i>									
11	Bottlenose Dolphin	<i>Tursiops truncatus</i>	X						X		
12	Common Dolphin	<i>Delphinus delphis</i>									
13	Striped Dolphin	<i>Stenella coeruleoalba</i>									
14	Risso's Dolphin	<i>Grampus griseus</i>									
15											
16	Land Mammals										
17	Santa Fé Rice Rat	<i>Oryzomys bauri</i>									
20	Santiago Rice Rat	<i>Nesoryzomys swarthi</i>									
21	Black (Ship) Rat	<i>Rattus rattus</i>									
22	Brown (Norwegian) Rat	<i>Rattus norvegicus</i>					X				
23											
24	Bats										
25	Galapagos Red Bat	<i>Lasiurus brachyotis</i>									
26	Hoary Bat	<i>Lasiurus cinerius</i>									

Insects of the Galápagos

COMMON NAME		SCIENTIFIC NAME	SANTA CRUZ BALTRA, ET AL	GENOVESA	SOUTH PLAZA	SANTA FE	SAN CRISTOBAL	ESPANOLA	FLOREANA CHAMPION	SANTIAGO BARTOLOME
1	Butterflies									
2	Galapagos Sulphur	<i>Phoebis sennae marcellina</i>								
3	Galapagos Silver Fritillary	<i>Agraulis vanillae galapagensis</i>								
4	Galapagos Blue	<i>Leptodes parrhasioides</i>								
5	American Painted Lady	<i>Vanessa virginensis</i>								
6	Painted Lady spp	<i>Vanessa carye</i>								
7	Queen	<i>Danaus gilippus</i>								
8	Large-tailed Skipper	<i>Urbanus galapagensis</i>								
9										
10	Moths									
11	Green Hawkmoth	<i>Eumorpha labuscae</i>								
12	Hawkmoth spp	<i>Hyles lineata florilega</i>								
13	Hawkmoth spp	<i>Manduca rustica galapagensis</i>								
14	Footmen Moth	<i>Utethesia spp</i>								
15	Noctuid Moth	<i>Ascalapha odorata</i>								
16										
17	Dragonflies									
18	Galapagos Darner	<i>Aeshna galapagoensis</i>								
19	Spot-winged Glider	<i>Pantala hymenaea</i>								
20	Wandering Glider	<i>Pantala flavescens</i>					X		X	
21	Meadowhawk	<i>Sympetrum sp.</i>								
22										
23	Grasshoppers & Crickets									
24	Large Painted Locust	<i>Schistocerca melanocera</i>								X
25	Small Painted Locust	<i>Schistocerca literosa</i>		X						
26	Galapagos Field Cricket	<i>Gryllus abditus</i>	H					X		
27										
28	Other Bugs									
29	Galapagos Carpenter Bee	<i>Xylocopa darwini</i>		X			X	X	X	X
30	Galapagos Green-eyed Horsefly	<i>Tabanus vittiger</i>							X	X
31	Spotless ladybird	<i>Cylonedra sanguinea</i>								
32	Yellow Paper Wasp (Introduced)						X		X	
33	ANT LION								X	
34	Ants									
35	Carpenter Ant	<i>Camponotus sp.</i>								
36	Little Fire Ant	<i>Wasmannia auropunctata</i>							X	

Plants of the Galápagos

	COMMON NAME	SCIENTIFIC NAME	SANTA CRUZ BALTRA, ET AL	GENOVESA	SOUTH PLAZA	SANTA FE	SAN CRISTOBAL	ESPANOLA	FLOREANA CHAMPION	SANTIAGO BARTOLOME	White/Green ~ Anything's possible!
											Endemic
1	Galapagos Acacia	<i>Acacia rorudiana</i>					X				
2	Mesquite	<i>Prosopis juliflora</i>	X					X	X		
3	Saltbush	<i>Cryptocarpus pyriformis</i>		X		X		X	X		
4	Salt sage	<i>Atriplex peruviana</i>									
5	Red Mangrove	<i>Rhizophora mangle</i>	Xx	X			X				
6	Black Mangrove	<i>Avicenna germinans</i>							X		
7	White Mangrove	<i>Laguncularia racemosa</i>	X						X		
8	Button Mangrove	<i>Conocarpus erectus</i>					X				
9	Palo Santo	<i>Bursera malcophilla</i>	X	X		X	X		X		
10	Galapagos Shore Petunia	<i>Cacabus miersi</i>									
11	Muyuyo (Yellow Cordia)	<i>Cordia lutea</i>		X		X					
12	Galapagos Croton	<i>Croton scouleri</i>		X		X	X		X		
13	Galapagos Cotton	<i>Gossypium barbadense</i>	X					X	X		
14	Seaside Heliotrope (scorpionweed)	<i>Heliotropium curassavicum</i>		X			X	X	X		
15	Manzanillo (poison apple)	<i>Hippomane mancinella</i>					X				
16	Arrow-leaf morning glory	<i>Ipomoea linearifolia</i>		X				X			
17	Beach morning glory	<i>Ipomoea pes-caprae.</i>		X					X		
18	San Cristobal Cut-leaf Daisy	<i>Lecocarpus darwinii</i>									
19	Floreana Cut-leaf Daisy	<i>Lecocarpus pinnatifidus</i>							X		
20	Galapagos Tomato	<i>Lycopersicon cheesmanii</i>									
21	Needle-leaved Daisy (G. rosemary)	<i>Macraea loricifolia</i>					X				
22	Leather leaf	<i>Maytenus octogona</i>			X	X			X		
23	Candelabra Cactus	<i>Jasminocereus thouarsii</i>					X		X	X	
24	Giant Prickly Pear Cactus	<i>Opuntia echios</i>		X	X	X			X		
25	Giant Prickly Pear Cactus	<i>Opuntia megasperma</i>					X				
26	Giant Prickly Pear Cactus	<i>Opuntia galapageia</i>								X	
27	Giant Prickly Pear Cactus	<i>Opuntia helleri</i>	X								
28	Lava cactus	<i>Brachycereus nesioticus</i>		X						X	
29	Palo verde	<i>Parkinsonia aculeata</i>	X						X		
30	Galápagos mistletoe	<i>Phoradendron henslovii</i>									
31	Galápagos milkwort	<i>Polygala galapageia</i>									
32	Galapagos purslane	<i>Portulca howelii</i>						X			
33	Galapagos carpetweed	<i>Sesuvium edmonstonei</i>			X						
34	Common carpetweed	<i>Sesuvium portulacastrum</i>		X				X	X		
35	Galapagos guava	<i>Psidium galapageium</i>									
36	Thorn Shrub	<i>Scutia spicata</i>			X	X					

Plants of the Galápagos

	COMMON NAME	SCIENTIFIC NAME	SANTA CRUZ BALTRA, ET AL	GENOVESA	SOUTH PLAZA	SANTA FE	SAN CRISTOBAL	ESPANOLA	FLOREANA CHAMPION	SANTIAGO BARTOLOME
	White/Green ~ Anything's possible!									
	Endemic									
37	Scalesia "Daisy Tree"	<i>Scalesia pedunculata</i>	X							
38	Radiate-headed Scalesia	<i>Scalesia affinis</i>								
39	Scalesia	<i>Scalesia divisa</i>								
40	Heller's Scalesia	<i>Scalesia helleri</i>								
41	Long-haired Scalesia	<i>Scalesia villosa</i>							X	
42	Scalesia Stewartii	<i>Scalesia Stewartii</i>								X
43	Santa Fe Scalesia	<i>Scalesia Barringtoni</i>				X				
44	Mollugo	<i>Mollugo flavescens</i>								X
45	Grey Matplant	<i>Tiquilia spp</i>					X			X
46	Pega Pega	<i>Pisonia floribunda</i>								
47	White-haired Tournefortia	<i>Tournefortia pubescens</i>	X							
48	Rufous-haried tournefortia	<i>Tournefortia rufo-sericea</i>								
49	Multi-colored Lantana	<i>Lantana camaraflower</i>					X			
50	Galapagos Lantana	<i>Lantana peduncularis</i>							X	
51	Pearl Berry	<i>Vallesia glabra</i>								
52	Waltheria	<i>Waltheria ovata</i>		X			X		X	
53	Oily Pectis	<i>Pectis tenuifolia</i>								X
54	Miconia	<i>Miconia robinsoniana</i>					X			
55	Galapagos Tree fern	<i>Cyathea weatherbyana</i>	X				X			
56	Thin-leafed Darwin's Shrub	<i>Darwiniothamnus tenuifolius</i>								
57	Buttonhole orchid	<i>Epidendrum spicatum</i>								
58	Indefatigable passion flower	<i>Passiflora colinvauxii</i>								
58	White wild coffee	<i>Psychotria rufipes</i>								
60	Galapagos Bromeliad	<i>Tillandsia insularis</i>	X							
61	Bracken	<i>Pteridium aquilinum</i>	X				X			
62	Hart's Tongue	<i>Polypodium phyllitidis</i>	X							
63	Hand Fern	<i>Doryopteris pedata</i>								
64	Cat's Claw	<i>Zanthoxylum fagara</i>					X			
65	Galapagos Sedge	<i>Cyperus anderssonii</i>				X				X
66	Galapagos Spurge	<i>Chamaesyce amplexicaulis</i>		X						X
67	Inkberri/ Sea grape	<i>Scaevola plumieri</i>					X			
68	Goat's Head	<i>Tribulus cistoides</i>		X				X		
69	Clubmoss	<i>Lycopodium cernuum</i>								
70	Cherry Tomato	<i>Solanum pimpinellifolium</i>								
71	PLUMBAGO								X	
72	Horse Purslane	<i>Trianthema portunacastrum</i>								

Sea Life of the Galápagos - A work in progress!



1 Sally Lightfoot Crab



2 Semi-terrestrial Hermit Crab



3 Galapagos Hermit Crab



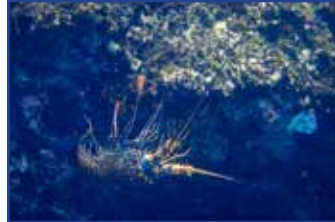
4 Fiddler Crab



5 Ghost Crab



6 Velvet Purple Crab



7 SPINY LOBSTER



8 Galapagos Twin-spot Octopus



9 White-tipped Reef Shark



10 Black-tipped Shark



11 Galapagos Shark



12 Hammerhead Shark



13 Manta Ray



14 Spotted Eagle Ray



15 Diamond Sting Ray



16 Golden Cow-nosed Ray



17 Marbled Sting Ray



18 Tiger Snake Eel



19 Jewel Moray



20 Fine-spotted Moray

NEW CHECKLIST PROJECT

Our *Sea Life of the Galapagos Checklist* is a new project that is a work in progress, with all images by Kevin Loughlin and Rogelio "Pedro" Guaycha. Using simple, compact digital cameras, we are working hard to get more images inserted, but hope that this is helpful for your snorkeling trips!

Sea Life of the Galápagos - A work in progress!



21 Blue Sea Star



22 Chocolate Chip Star



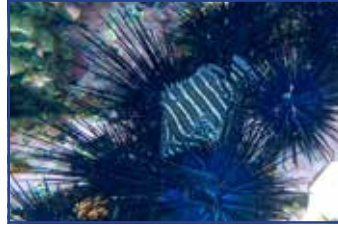
23 Panamic Cushion Star



24 Pyramid Sea Star



25 Pencil Urchin



26 Spiny Urchin



27 Green Urchin



28 White Urchin



29 Sea Cucumber spp



30 Sea Cucumber spp



31 Blue-and-Gold Snapper



32 Panamic Sergeant Major



33 Giant Damsel



34 RING-TAILED DAMSEL



35 Yellow-tailed Damsel



36 Leather Bass



37 Moorish Idol



38 Three-banded Butterflyfish



39 Barberfish



40 King Angelfish



41 Yellow-finned Surgeonfish



42 Yellow-tailed Surgeonfish



43 Creole Fish

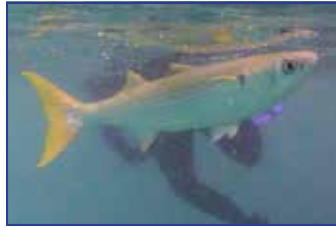


44 Yellow-tailed Grunt

Sea Life of the Galápagos - A work in progress!



45 Dusky Chub



46 Yellow-tailed Mullet



47 Black-tailed Mullet



48 Striped Mullet



49 Streamer-tailed Hogfish (m)



50 Streamer-tailed Hogfish (j)



51 Spinster Wrasse



52 Hieroglyphic Hawkfish



53 Bi-colored Parrotfish



54 Blue-chinned Parrotfish (m)



55 Blue-chinned Parrotfish (f)



56 Bump-head Parrotfish



57 Trumpetfish



58 Coronefish



59 Needlefish



60 SCRAWLED FILEFISH



61 Yellow-finned Tuna



62 Blunthead Triggerfish



63 Yellow-sided Triggerfish (D)



64 Yellow-sided Triggerfish



65 Goatfish



66 Galapagos Grunt



67



68

Sea Life of the Galápagos - A work in progress!



69 Bulls-eye Puffer



70 Pacific Boxfish



71 Guineafowl Puffer (typical)



72 Guineafowl Puffer (Yellow)



73



74



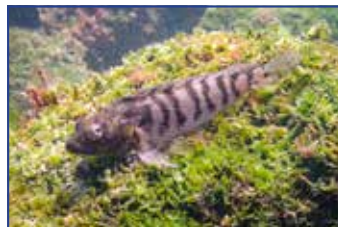
75 Balloonfish



76 Spotfin Burrfish



77 Calico Lizardfish



78 Bravo Clinid



79 Flag Cabrilla



80 Panamic Fanged Blenny



81 Galapagos Blenny



82 Stone Scorpionfish



83 Tropical Flounder



84 SPOT CHROMIS



85 Cortez Rainbow Wrasse



86 Black-tipped Cardinalfish



87 Pacific Sardine



88 CORAL HAWKFISH



89



90



91



92



Sharing Exceptional Experiences with Thousands Since 1993

WILDSIDENATURE TOURS

BIRDING • PHOTOGRAPHY • WILDLIFE ADVENTURES WORLDWIDE

1.888.875.9453